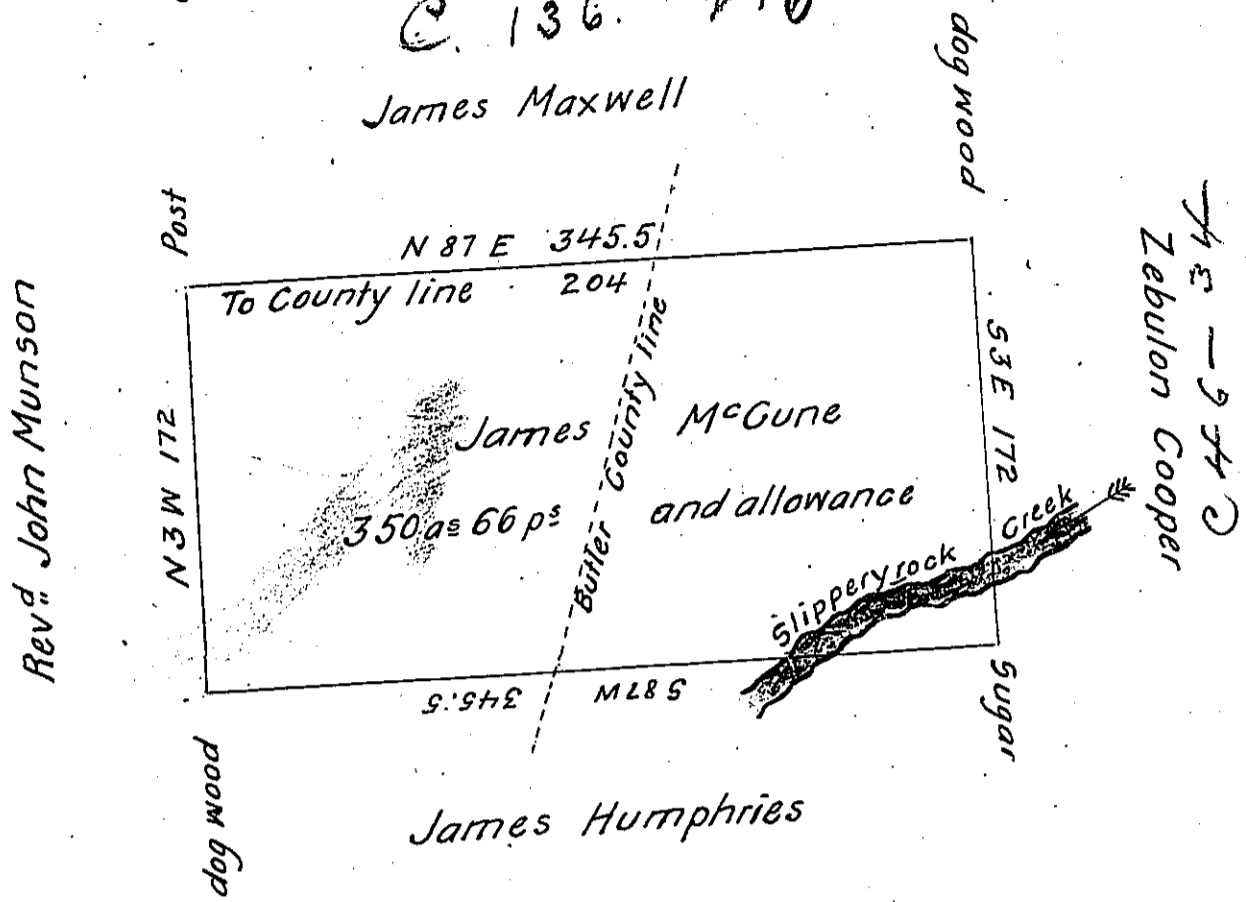


C. 136. 216  
James Maxwell



The above is a draft of a tract of Land Situate in Slippery rock Township Mercer County Surveyed the 28 day of February A.D. 1828. In pursuance of a Warrant granted to James M<sup>c</sup>Gune the 14<sup>th</sup> day of July 1807. Bounded as described above, the east end extending into Butler County. Containing three hundred and fifty acres and 66 perches, and allowance of Six per Cent for roads. This tract, has large, and valuable Improvements, of an early date. Two families residing on it at the time the Survey was made.

To Gabriel Hiester Esq<sup>r</sup>.  
Surveyor General.

A. Brown. D.S.  
Mercer County  
Hugh Conway D.S.  
Butler County

IN TESTIMONY that the above is a copy of the original remaining on file in the Department of Internal Affairs of Pennsylvania, made conformably to an Act of Assembly approved the 16th day of February, 1833, I have hereunto set my Hand and caused the Seal of said Department to be affixed at Harrisburg, this sixth day of February 1906

*James A. Brown*  
Secretary of Internal Affairs.